

JetBLACK SAFETY



HANDS-FREE PERSONNEL CLEANING BOOTHS

If you have employees moving between dusty work areas to clean-zones, the installation of a JetBlack Safety Hands-Free Cleaning Booth will allow them to quickly remove residue dust, powder or contaminant from all PPE and work-wear clothing.

The Hands-Free Cleaning Booth is guaranteed to meet or exceed OSHA requirements. It operates by utilising high-velocity, low-pressure air that is effective in dislodging all materials from clothing and much easier to use than alternative vacuum systems.

More importantly it avoids many of the issues associated with compressed air which has the potential to be very dangerous in this type of application due to the high air pressures involved.

For further information, please refer to our 'Dangers of Compressed Air' fact sheet.



HANDS-FREE PERSONNEL CLEANING BOOTHS

Simple by Design:

The JetBlack Safety Cleaning Booth is a self-contained, semi-automatic, hands-free de-dusting system which removes, extracts and collects dust and debris from employees' dirty work clothes.

Suitable for indoor and outdoor use (with additional covers), this stand-alone system significantly improves the health of workers by providing a quick and effective method for cleaning dusty clothes.

Extraction Options:

Two extraction options are available with the Personnel Cleaning Booth.

1. Stand-alone Cyclone Extractor:

This is a mobile cyclone dust extractor capable of handling most types of dusts. Quiet in operation, it features automatic filter cleaning providing consistent airflow and unrivalled performance. The extractor features a HEPA H14 filter as standard and dust is collected in a plastic bag for easy disposal.

Features include:

- Motor Power 1.5kW (1Ph, 230V, 50Hz as standard)
- 1,600m³/hr air flow performance (12 air changes/min)
- Supplied with HEPA H14 polyester cartridge filter, plastic collection bag and heavy duty impeller
- Automatic filter cleaning for consistent performance
- Low noise levels 74dB(A) @ 3m
- Filter cartridge captures > 99.995% of dust 0.3 micrometers (µm) in diameter

2. Extraction Fan Unit:

Where an existing dust extraction system may already be installed, we can offer a powerful centrifugal fan unit.

Features include:

- Motor Power 1.1kW (5Hp)
- 1 or 3Ph with a range of voltages available
- 1500m³/hr air flow performance
- Additional ducting can be supplied if required
- Please note- no filtration is supplied with this option

Key Features:

- Safe and easy to operate/maintain
- Modular construction
- Powerful 'air shower' effect
- Semi-automated, self-contained hands-free system
- 6 nozzle reciprocating motion air delivery system
- Includes option of stand-alone Cyclone Extractor
- Indoor/Outdoor options
- HEPA H14 filter as standard

Typical Applications:

- Quarrying / Stone / Aggregate facilities
- Fibre moulding / Materials / Textile production
- Construction sites





How does the Personnel Cleaning Booth operate?

Step 1: Upon entering the booth, the interior light and cyclone extractor will automatically turn-on.

Step 2: Air is immediately drawn through the holes in the roof of the booth, creating an air-shower effect.

Step 3: To begin removing dust and contamination from clothing, the 6 reciprocating nozzles need to be switched on via the green start button.

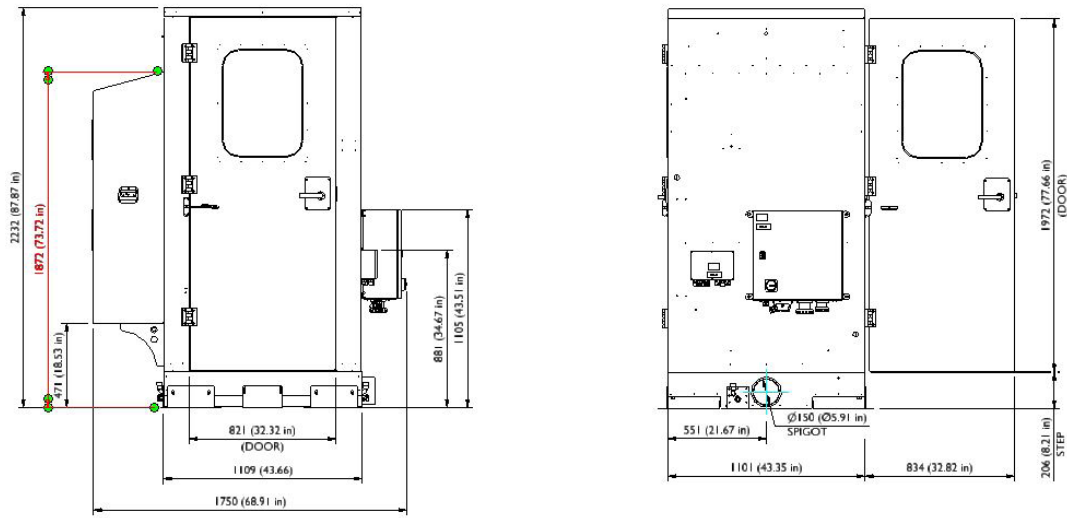
Step 4: Any displaced dust is drawn down to the floor grille, extracted by a vacuum effect and collected by the dust extractor where it can be disposed of, or alternatively recycled.

Step 5: Exiting the booth automatically stops the air flow. The extractor continues to run for a set time, and a filter agitator process begins.

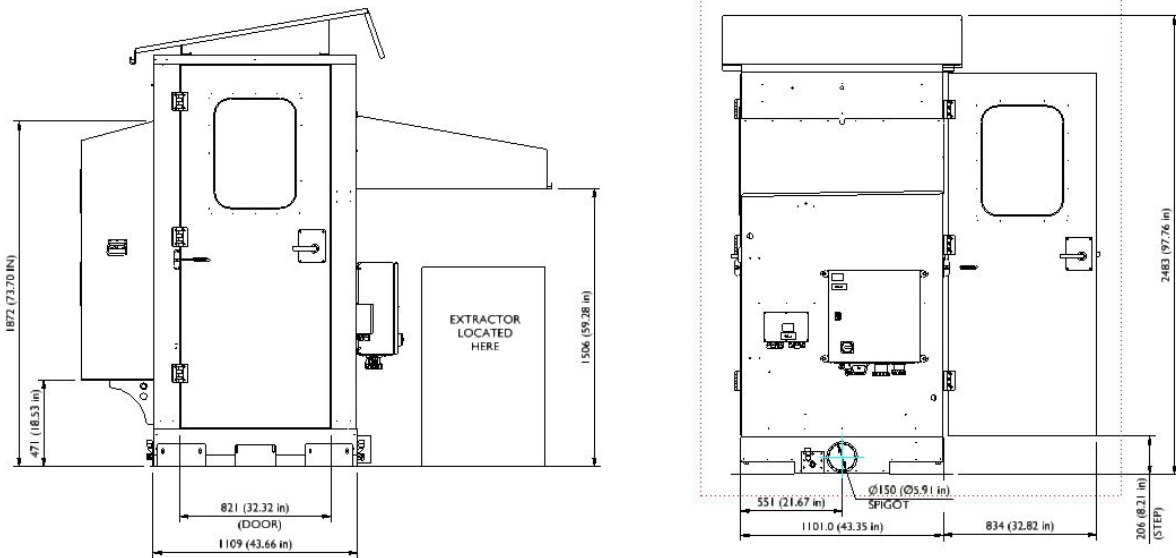


Please note that the removal of debris and contaminants will produce airborne dust. This dust could be hazardous and present an inhalation risk to the user. Exposure to hazardous dust should be adequately controlled in line with the Control of Substances Hazardous to Health Regulations 2002 (COSHH). We recommend that users implement suitable and adequate engineering controls for the airborne dust released such as extraction and the use of a down flow booth, respiratory protective equipment (RPE) and PPE. Users must wear appropriate eye, ear and respiratory protection at all times whilst operating the JetBlack Safety equipment.

Outline Drawing - Internal Booth version:



Outline Drawing - External Booth version:



JetBlack Safety

Weycroft Avenue, Millwey Rise Industrial Estate,
Axminster, Devon, EX13 5HU, United Kingdom
Tel: +44(0)1297 529242
Email: uksales@jetblacksafety.com
Web: www.jetblacksafety.com

JetBlack Safety

76 Augusta Rockland Road
Windsor, Maine, ME 04363, United States
Tel: +1 (207) 445 2518 Fax: +1 (207) 445 2497
Email: inquiries@aci-inc.com
Web: www.jetblacksafety.com